

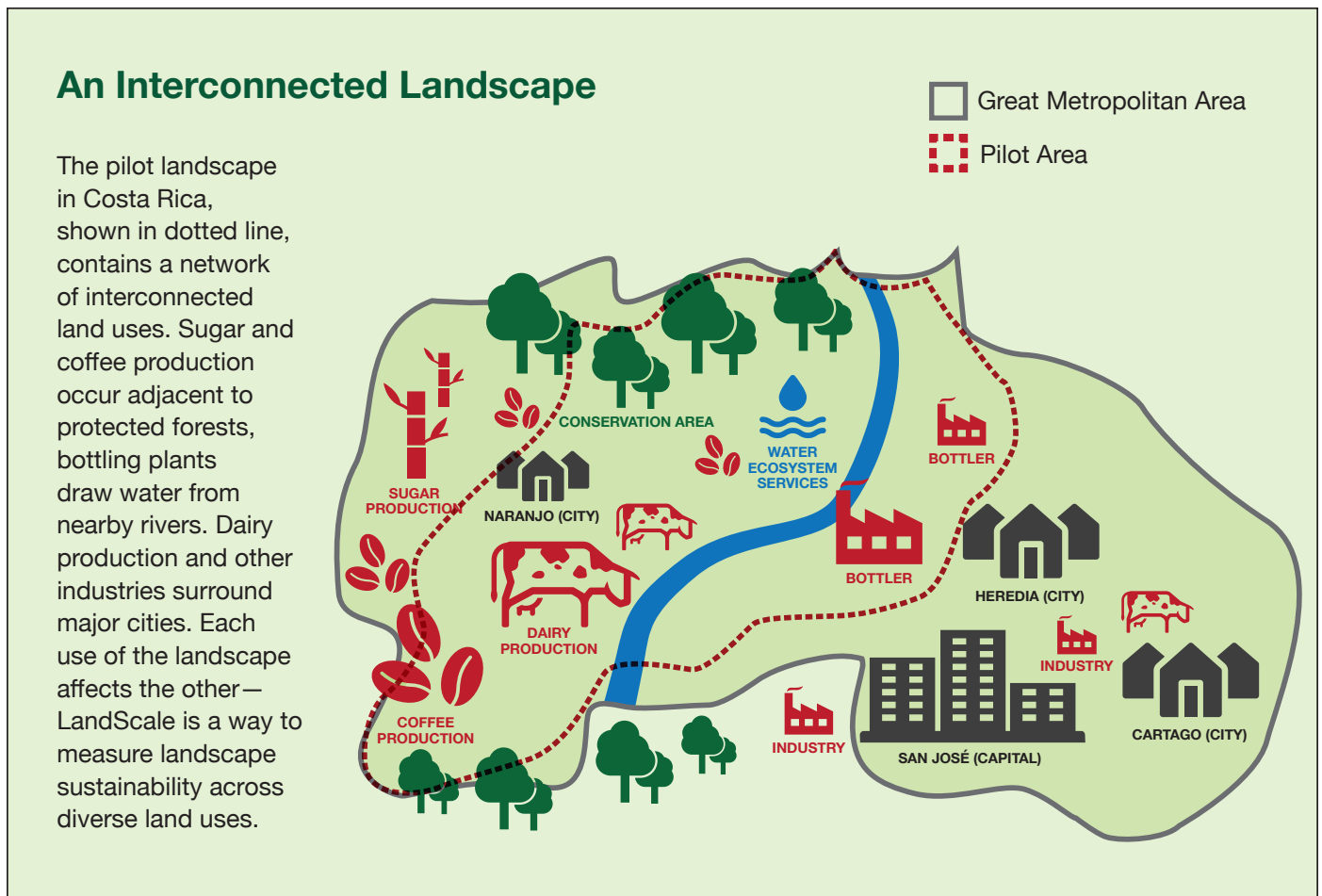
Pilot Landscape in Costa Rica



The pilot landscape in Costa Rica consists of a portion of the GAM, as shown below. The area has a mix of different land uses, including cloud forest, pastures for milk production, coffee plantations and several minor crops. The LandScale pilot has two main components.

First, IUCN and FUNDECOR are working towards a rigorous, verified assessment of the current status of the landscape’s sustainability at scale to show the broader impact of Agua Tica’s activities, which can then support the identification of areas for further investment.

Second, the LandScale pilot activities will link Agua Tica’s efforts to other public and private initiatives in the landscape. In addition, the government has developed sector-specific Nationally Appropriate Mitigation Action (NAMA) plans in the coffee and livestock sectors that include activities in the landscape and the maintenance of the ongoing PES programme; and coffee companies and cooperatives are implementing their own landscape restoration initiatives. Using LandScale as an organizing framework, IUCN and FUNDECOR have engaged with these various initiatives to better align their goals and ensure that their activities translate into progress towards common, large-scale goals.



LANDSCALE SECRETARIAT



DONOR

Supported by:



Federal Ministry for the Environment, Nature Conservation and Nuclear Safety

CONTACT

landscape.org
piloting@landscape.org

based on a decision of the German Bundestag

www.international-climate-initiative.com/en